

# St James' Church of England Junior School



Upton Street, Gloucester GL1 4JU  
Telephone: (01452) 520714 Fax: (01452) 405801  
Email: [admin@st-james-jun.gloucs.sch.uk](mailto:admin@st-james-jun.gloucs.sch.uk)  
Website: [www.st-james-junior.co.uk](http://www.st-james-junior.co.uk)  
Executive Headteacher: Mr Simon Millington



## Newsletter

20 October 2023

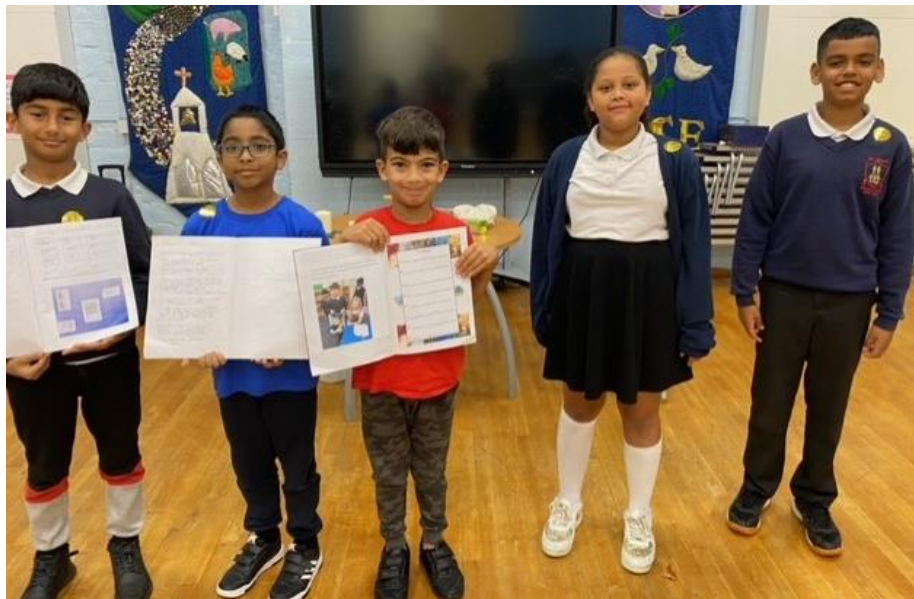
Our Value for the year is **Respect** Our Value for this term is **Kindness**

Congratulations to our:

### Values Cup Winners



### Good Work Winners



**Congratulations to 3B (Miss Evans) who won the weekly attendance award this week with over 98% attendance. Well done everyone else with over 93%.**

## Important Dates & Holidays

23-27 October Year 5 Residential to Wick Court  
Thursday 26 October 3.20 pm Cake Sale  
Wednesday 25 October 9.15 am Harvest Festival at St James' Church  
Friday 27 October 3.20 pm **Last day of Term 1** – school finishes at 3.20 pm

### **Monday 30 October – Friday 3 November - Half-term**

Monday 6 November First Day of Term 2  
Wednesday 15 November School Photos – Uniform needs to be worn and bring PE kit  
Wednesday 22 November Flu Immunisation (Please return slips asap)

**Take a look at the school calendar and term dates for 2023-24 and 2024-25 [here](#).**

## Save the Date!

On the Thursday 9th November after school we will have Laptops set up to support families to Register for the Holiday Activities and Food (HAF) Schemes which run during the school breaks. Members of their team will also be on hand to help and give more information. Don't miss out on this opportunity to get signed up! - **See Mrs Faulkner for more information.**

Javan Holgate

Community Connector Tel:07340709871

The Venture Community Hub. Hub Site Address: 50-52 Northfield Road, Gloucester, GL4 6TY



If you have any old men's shirts that you no longer need can they please be brought into school? We can use them for painting aprons for the children.

Thanks – **Mrs Faulkner**

**After-School Clubs** – There are only so many spaces for our after-school clubs. If your child does not get a place you will not receive a text from school. Please don't send them to an after-school club if you have not received a text to say they have a place. It is on a first-come-first-served basis – slips must be in quickly!

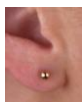
## Harvest Festival – Wednesday 25 October

Everyone is welcome to attend our Harvest Festival next Wednesday at St James' Church at 9.15 am.

Please send donations of food that will last a long time (eg tins, pasta, rice) for the Food Bank in with your child from today until Wednesday morning.



**REMINDER: School meals are £2.54 and should be paid in advance, in cash or via Parentpay. Parentpay codes have been given to all non-free school meal Year 3 parents. Parentpay codes are available from the school office, all day Monday and mornings Tuesday-Friday.**



**REMINDER: For safety reasons, children should only wear one pair of stud earrings to school and not dangly or hoop earrings. They will be asked to remove them if they are not safe.**

## Doctors, Opticians and Dentist Appointments

Routine doctors, opticians and dentist appointments **SHOULD NOT** be made during school time. Only emergency appointments and hospital appointments should be made during the school day. All other appointments should be made after school, at weekends or during the school holidays. If an appointment has already been made children should be in school before, if possible, and should be brought into school after the appointment, if time. A whole day is not required for a local appointment. Please email or text if your child is going to an appointment. If you have to make an appointment for your child at the beginning of the day, please inform the school.

## Ten-pin bowling competition

We went to Tenpin to do some bowling on Wednesday. We scored 508 points in the competition. We came 4<sup>th</sup> against Barnwood Academy, Upton St Leonards, Calton Primary and also St Peters and Widden Primary. Olly got a strike for us and the rest of us got a spare and we did so well in the game.

Written by Clara, 4A.

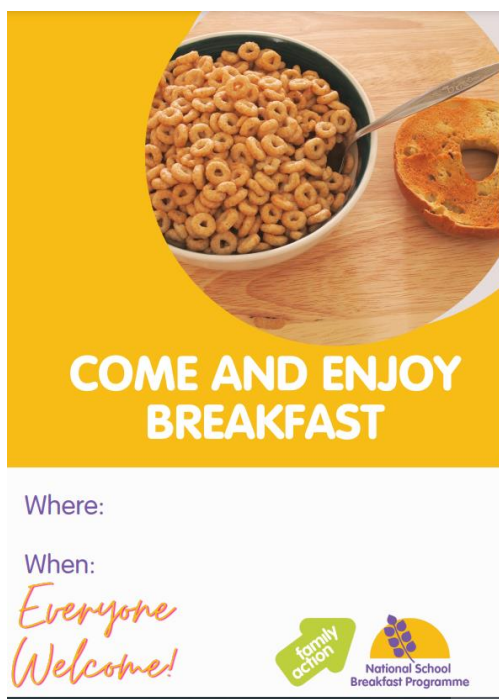
[Take a look at the photos here from the ten-pin bowling on Wednesday this week.](#)

## School Uniform

Please make sure that your child is wearing correct school uniform. Only on PE days should they be wearing trainers and t-shirts, preferably house t-shirts. On other school days they should be wearing the correct uniform and black shoes. Navy jumpers or cardigans should be worn over pale blue/white polo shirts/shirts. No hoodies should be worn into school. Now the weather is colder and wetter they need to bring a waterproof, warm coat with a hood. The full school uniform is available in our prospectus (available from the office) or on our website – [st-james-junior.co.uk](http://st-james-junior.co.uk)

### Items for sale from the school office

**House PE t-shirts, rucksacks, book bags and school ties** are available to purchase from the school office from 8.30 am – 3.30 pm. Please bring correct change. We do not take payment with cards. T-shirt (£4). Book bag (£7.50), Rucksack (£11.60), School tie (£3.25).



## School Hours

<b>8.15 am</b>	Breakfast Club
<b>8.30 am</b>	School playground is staffed – children can be left after 8.30 am
<b>8.50 am</b>	Pupils come into school
<b>9.00 am</b>	First session
<b>3.20 pm</b>	End of school day

**Pupils should be in school by 8.50 am.** All children who are late need to be brought into school by a parent to sign them in. If children arrive in school later than 10.30 am we may not be able to order them a hot lunch so they should bring in a packed lunch.

Breakfast Club is available from 8.15-8.45 am. **Children are expected to be punctual, but they should not arrive in school before 8.15 am unless they are going to Breakfast Club.**

## Coughs & Colds

It's fine to send your child to school with a minor cough or common cold. But if they have a fever, keep them off school until the fever goes. Encourage your child to throw away any used tissues and to wash their hands regularly, at home and at school.

## Sickness & Diarrhoea

If your child has sickness or diarrhoea they shouldn't come into school until 48 hours after their last bout of sickness or diarrhoea.

## Chicken Pox and other infectious diseases

If you think your child has Chicken pox or any other infectious disease please do not bring them into school and let us know asap. If you do not know what the rash is please see a pharmacist.

**Head lice and nits** are very common in young children and their families. They do not have anything to do with dirty hair and are picked up by head-to-head contact. Please look up the advice from the NHS or ask your pharmacist on how to treat head lice if you find them.



## PLACES WHERE KIDS EAT FREE (OR FOR £1) DURING THE OCTOBER HALF TERM 2023

[moneysavingcentral.co.uk/kids-eat-free](https://moneysavingcentral.co.uk/kids-eat-free)



### MORRISONS

Spend £4.49 and get one free kids meal all day, every day.

### M&S CAFES

Spend £5 & get one free kid's meal Mon - Fri during the Oct Half term (various dates)

### SAINSBURYS CAFES

Kids eat for £1 with the purchase of an adult hot main. From 11:30am every day.

### ASDA

Kids eat for £1 All Day, Every Day at Asda cafes, with no adult spend required.

### BEEFEATER & BREWERS FAYRE

Two children under 16 can get a free breakfast every day with one paying adult!

### THE REAL GREEK

Kids under 12 eat FREE every Sunday for every £10 spent by an adult

### TRAVELODGE & PREMIER INN

Buy 1 Adult Breakfast from just £8.99 & up to two kids eat breakfast for free

### SIZZLING PUBS

Every Monday to Friday, 3 - 7pm, kids' mains are £1 with every adult meal.

### TGI FRIDAYS

Kids Eat Free When 'Stripes Rewards Members' purchase any adult meal (Via App)

### PRETO

Kids up to age 10 eat free all day, every day with paying adults at Preto in Half Terms

### YO! SUSHI

From Monday 16th October - Friday 27th 2023 kids eat free with every £10 adult spend

### GORDON RAMSEY RESTAURANTS

Kids under 8 eat FREE all day, every day at selected Gordon Ramsay restaurants

### BILLS

2 kids eat FREE Monday - Friday from Monday 23rd October - Friday 3rd November 2023

### BELLA ITALIA

Children eat for £1 with any adult main. The offer is valid 4-6pm Mon to Thurs.

### WHITBREAD INNS

Two kids under 16 eat for FREE with every adult breakfast purchased

### TABLE TABLE

Two children under 16 can get a free breakfast every day with one paying adult!

### PAUSA CAFE @ DUNELM

Kids get 1 mini main, 2 snacks & a drink FREE with every £4 spend after 3pm

### IKEA

Kids get a meal from 95p daily from 11am

### HUNGRY HORSE

Kids eat for £1 on Mondays

### FUTURE INNS

Under 5s eat for free with any adult meal.

## Visit your local library!

Gloucestershire Libraries are running a Halloween costume swap between 9 October and 1 November to help reduce waste and support the cost of living. They are also calling out for costume donations across Gloucestershire - just pop to your local library. 🗑️ Accessories, whole and part costumes will be accepted. Both adult and children's costumes welcome. 🐱

We encourage anyone who can help to get touch with your local library.



Gloucestershire Libraries #GreenerGloucestershire



Student wellbeing is central to the ethos of our school. We are therefore delighted to share with you a new NHS Gloucestershire funded service designed to support young people aged 7-12 (years 3-7) who are experiencing fears or worries; **Lumi Nova**.

### What is Lumi Nova?

Lumi Nova: Tales of courage is an intergalactic adventure game where players step into the shoes of a newly recruited Luminaut and start an exciting adventure through space - travelling to different planets, meeting new characters, solving puzzles and attempting challenges. Lumi Nova support young people to fight fears & manage worries. Whilst exploring planets, customising characters and earning treasure your child breaks their fears and worries down into manageable steps, learning life-long skills and building resilience.

Lumi Nova is designed for 7 - 12 year olds (school years 3 - 7) who are having difficulties with fears and worries related to social situations, separation or phobias, but may also be helpful for young people outside this age range.

Designed by BFB Labs, Lumi Nova was developed with NHS clinicians and leading academics. It is based upon Cognitive Behavioural Therapy and Exposure Therapy which are proven to be effective. Lumi Nova is recommended by NICE (National Institute for Health & Care Excellence) and adheres to strict standards of clinical safety.

### How to Access Lumi Nova:

To use Lumi Nova you must first register to get a game key by visiting [luminova.app/glos](https://luminova.app/glos) and completing a short registration form. You will then receive an SMS message that will guide you through getting started.

You will be directed to download Lumi Nova. Lumi Nova is free to download from the Apple and Google Play Stores and is compatible with iPhones, iPads and most Android smartphones and tablets.

### Where can I find out more about Lumi Nova?

- More information about Lumi Nova including FAQs and case studies can be found at [luminova.app/glos](https://luminova.app/glos)
- If you have any questions please reach out to the lumi nova team: [luminova@bfb-labs.com](mailto:luminova@bfb-labs.com)
- To listen to a short presentation about Lumi Nova you can attend a 30 minute [Parent Lumi Nova Discovery Session](#)



# St James' Church of England Junior School

## School Term Dates & Holidays 2023-24

SEPTEMBER					OCTOBER					NOVEMBER									
Mon		4	11	18	25	Mon		2	9	16	23	30	Mon		6	13	20	27	
Tues		5	12	19	26	Tues		3	10	17	24	31	Tues		7	14	21	28	
Wed			6	13	20	27	Wed		4	11	18	25	Wed	1		8	15	22	29
Thur			7	14	21	28	Thur		5	12	19	26	Thur	2		9	16	23	30
Fri	1		8	15	22	29	Fri		6	13	20	27	Fri	3		10	17	24	
Sat		2	9	16	23	30	Sat		7	14	21	28	Sat		4	11	18	25	
Sun		3	10	17	24		Sun	1		8	15	22	29	Sun		5	12	19	26
DECEMBER					JANUARY					FEBRUARY									
Mon		4	11	18	25	Mon	1	8	15	22	29	Mon		5	12	19	26		
Tues		5	12	19	26	Tues	2	9	16	23	30	Tues		6	13	20	27		
Wed		6	13	20	27	Wed	3	10	17	24	31	Wed		7	14	21	28		
Thur		7	14	21	28	Thur	4	11	18	25		Thur	1		8	15	22	29	
Fri	1		8	15	22	29	Fri	5	12	19	26		Fri	2		9	16	23	
Sat		2	9	16	23	30	Sat		6	13	20	27	Sat		3	10	17	24	
Sun		3	10	17	24	31	Sun		7	14	21	28	Sun		4	11	18	25	
MARCH					APRIL					MAY									
Mon		4	11	18	25	Mon	1	8	15	22	29	Mon		6	13	20	27		
Tues		5	12	19	26	Tues	2	9	16	23	30	Tues		7	14	21	28		
Wed		6	13	20	27	Wed	3	10	17	24		Wed	1		8	15	22	29	
Thur		7	14	21	28	Thur	4	11	18	25		Thur	2		9	16	23	30	
Fri	1		8	15	22	29	Fri	5	12	19	26		Fri	3		10	17	24	31
Sat		2	9	16	23	30	Sat		6	13	20	27	Sat		4	11	18	25	
Sun		3	10	17	24	31	Sun		7	14	21	28	Sun		5	12	19	26	
JUNE					JULY					AUGUST									
Mon		3	10	17	24	Mon	1	8	15	22	29	Mon		5	12	19	26		
Tues		4	11	18	25	Tues	2	9	16	23	30	Tues		6	13	20	27		
Wed		5	12	19	26	Wed	3	10	17	24	31	Wed		7	14	21	28		
Thur		6	13	20	27	Thur	4	11	18	25		Thur	1		8	15	22	29	
Fri		7	14	21	28	Fri	5	12	19	26		Fri	2		9	16	23	30	
Sat		1	8	15	22	29	Sat		6	13	20	27	Sat		3	10	17	24	31
Sun		2	9	16	23	30	Sun		7	14	21	28	Sun		4	11	18	25	

Term Time	<input type="checkbox"/>	School Holiday	<input type="checkbox"/>
Bank Holidays	<input type="checkbox"/>	INSET Day	<input type="checkbox"/>

Christmas Bank Holidays	25 December 2023 26 December 2023
New Year Bank Holiday	1 January 2024
Good Friday	29 March 2024
Easter Monday	1 April 2024
Early May Bank Holiday	6 May 2024
Whitsun Bank Holiday	27 May 2024
Summer Bank Holiday	26 August 2024

Term 1	Wednesday 6 September – Friday 27 October	38 days
Term 2	Monday 6 November – Friday 22 December	35 days
Term 3	Tuesday 9 January – Friday 9 February	24 days
Term 4	Monday 19 February – Friday 22 March	25 days
Term 5	Tuesday 9 April – Friday 24 May	33 days
Term 6	Monday 3 June – Friday 19 July	35 days
<b>Total</b>		<b>190 days</b>

\*195 days are defined as "School days". In the school year 2023/24 pupils must attend for 190 days. Schools may decide individually or collectively which 5 days in the year are INSET or non-contact days (days pupils do not need to attend).

<b>190 DAYS</b> 100%  Very best chance of success	<b>183 DAYS</b> 96%  Off to a flying start	<b>179 DAYS</b> 94%  Less chance of success	<b>175 DAYS</b> 92%  Harder to make progress	More than <b>18 days</b> absence less than 90%  Persistent Absentee (Not fair on your child)
--	---	--	---	---