

# St James' Church of England Junior School



Upton Street, Gloucester GL1 4JU  
Telephone: (01452) 520714 Fax: (01452) 405801  
Email: [admin@st-james-jun.gloucs.sch.uk](mailto:admin@st-james-jun.gloucs.sch.uk)  
Website: [www.st-james-junior.co.uk](http://www.st-james-junior.co.uk)  
Executive Headteacher: Mr Simon Millington



## Newsletter

6 October 2023

Our Value for the year is **Respect** Our Value for this term is **Kindness**

Congratulations to our:

### Values Cup Winners



### Good Work Winners



**Congratulations to 5A (Mr Hutchinson/Mrs Bingham-Morrison's class) who won the weekly attendance award again this week with over 95% attendance.**

## Important Dates & Holidays (Term dates always here – <http://www.st-james-junior.co.uk>)

Tuesday 10 October	8.45 am	Coffee Morning
23-27 October		Year 5 Residential to Wick Court
Thursday 26 October	3.20 pm	Cake Sale
Wednesday 25 October	9.15 am	Harvest Festival at St James' Church
Friday 27 October	3.20 pm	Last day of Term 1 – school finishes at 3.20 pm

### **Monday 30 October – Friday 3 November - Half-term**

Monday 6 November		First Day of Term 2
Wednesday 15 November		School Photos – Uniform needs to be worn and bring PE kit
Wednesday 22 November		Flu Immunisation (Please return slips asap)

## School Uniform

Please make sure that your child is wearing correct school uniform. Only on PE days should they be wearing trainers and t-shirts, preferably house t-shirts. On other school days they should be wearing the correct uniform and black shoes. Navy jumpers or cardigans should be worn over pale blue/white polo shirts/shirts. No hoodies should be worn into school. Now the weather is colder and wetter they need to bring a waterproof, warm coat with a hood. The full school uniform is available in our prospectus (available from the office) or on our website – [st-james-junior.co.uk](http://st-james-junior.co.uk)

### Items for sale from the school office

**House PE t-shirts, rucksacks, book bags and school ties** are available to purchase from the school office from 8.30 am – 3.30 pm. Please bring correct change. We do not take payment with cards. T-shirt (£4). Book bag (£7.50), Rucksack (£11.60), School tie (£3.25).



### Doctors, Opticians and Dentist Appointments

Routine doctors, opticians and dentist appointments **SHOULD NOT** be made during school time. Only emergency appointments and hospital appointments should be made during the school day. All other appointments should be made after school, at weekends or during the school holidays. If an appointment has already been made children should be in school before, if possible, and should be brought into school after the appointment, if time. A whole day is not required for a local appointment. Please email or text if your child is going to an appointment. If you have to make an appointment for your child at the beginning of the day, please inform the school.



**REMINDER:** For safety reasons, children should only wear one pair of stud earrings to school and not dangly or hoop earrings. They will be asked to remove them if they are not safe.

**REMINDER:** Children should be in school by 8.50 am. All children who are late need to be brought into school by a parent to sign them in. If you know they will be late due to an appointment please ring to pre-order lunch if they have a hot lunch at school.

**REMINDER:** Data Sheets – Please return your child's data sheet to the office/their teacher as soon as possible so that we have correct, up-to-date information for your child.

## School Hours

<b>8.15 am</b>	Breakfast Club
<b>8.30 am</b>	School playground is staffed – children can be left after 8.30 am
<b>8.50 am</b>	Pupils come into school
<b>9.00 am</b>	First session
<b>3.20 pm</b>	End of school day

**Pupils should be in school by 8.50 am.** All children who are late need to be brought into school by a parent to sign them in. If children arrive in school later than 10.30 am we may not be able to order them a hot lunch so they should bring in a packed lunch.

Breakfast Club is available from 8.15-8.45 am. **Children are expected to be punctual, but they should not arrive in school before 8.15 am unless they are going to Breakfast Club.**

**REMINDER: School meals are £2.54 and should be paid in advance, in cash or via Parentpay. Parentpay codes have been given to all non-free school meal Year 3 parents. Parentpay codes are available from the school office, all day Monday and mornings Tuesday-Friday.**

## Head Lice Advice

Within most schools at any one time, there will be a small number of children infected with head lice. Infection levels remain fairly constant so we need your help to combat the bugs! Head lice and nits are very common in young children and their families. They do not have anything to do with dirty hair and are picked up by head-to-head contact. Please look up the advice from the NHS or ask your pharmacist on how to treat head lice if you find them.

## Coughs & Colds

It's fine to send your child to school with a minor cough or common cold. But if they have a fever, keep them off school until the fever goes. Encourage your child to throw away any used tissues and to wash their hands regularly, at home and at school.

## Sickness & Diarrhoea

If your child has sickness or diarrhoea they shouldn't come into school until 48 hours after their last bout of sickness or diarrhoea.

## Chicken Pox and other infectious diseases

If you think your child has Chicken pox or any other infectious disease please do not bring them into school and let us know asap. If you do not know what the rash is please see a pharmacist.

**Head lice and nits** are very common in young children and their families. They do not have anything to do with dirty hair and are picked up by head-to-head contact. Please look up the advice from the NHS or ask your pharmacist on how to treat head lice if you find them.

## Schools of Sanctuary Status

Hatherley and St James are extremely proud to have been awarded Schools of Sanctuary status. The Schools of Sanctuary initiative celebrates the good practice of schools who welcome asylum seeking and refugee families into their school community and foster a culture of welcome and inclusion for all. Schools of Sanctuary help their pupils and staff understand what it means to be seeking sanctuary and extend a welcome to everyone as equal, valued members of the school community.



# Coffee Morning



Tuesday 10<sup>th</sup> October

8:45-9:30am



We will be sharing information from the School Nursing Team.

All welcome.

## Lunchtime Book and Craft Club

Year 3s enjoying a lunchtime book and craft club run by our reading ambassadors.



## Language of the Month

At St James, we celebrate the many languages represented in our school. This October, the Language of the Month is Bengali so children will learn key phrases in Bengali. If you speak Bengali and would like to volunteer to read a story to children who share your language, please let Miss Kirby know.

**Learn Malayalam**

Good morning  
സുപ്രഭാതം  
suprabhatam

WORLD MAP

Malayalam originates from Kerala, India.

Number of speakers: 35,000,000

Fun fact: Malayalam is a combination of two words, meaning mountain (Mala) and end place (Alam).



# Denmark Road High School

Discover Realise Honour Shape



## OPEN EVENTS

Open Mornings  
Monday 9th and  
Tuesday 10th October  
8.45-10.30am  
Headteacher Welcome  
Talk at 9am

Open Evening  
Tuesday 10th October  
5-8pm  
Headteacher Welcome  
Talks at 5.15pm and  
6.30pm

Join us for the Denmark Road experience. No booking required.

Denmark Road High School, Gloucester, GL1 3JN



CEREBRA  
SLEEP  
PRACTITIONER

FREE  
ADVICE  
SESSIONS

FREE  
ENTRY FOR  
PARENT/  
CARERS

NEW ALLIANCE  
SERVICES  
BEING  
LAUNCHED

RAFFLE

FREE  
LUNCH

# Alliance SEN Conference

19th October  
Gloucester Rugby Club  
9am-4.30pm

Exhibitors



Speaking  
Education Lawyer

Occupational Therapist  
Independent Social Worker  
Speech and Language Therapist

Physiotherapist  
Alliance Directors  
LGO Investigator



Sponsored By



Scan the QR to  
book your place!

info@parentandcareralliance.org.uk  
www.parentandcareralliance.org.uk



# With The Ball



## Multisports and CheerDance October Holiday Club

Tues 31st October, Weds 1st & Thurs 2nd November

St Peter's Catholic Primary School, GL13PY

25+ Sports, Activities and Styles of Dance

Sibling & Pupil Premium Discounts

Suitable for Reception - Year 6



(9.00am - 3.00pm)

£27.50  
(1 day)

£79.20  
(3 days)

1 Day - Early Bird Discount!  
Secure Your Spot Now!

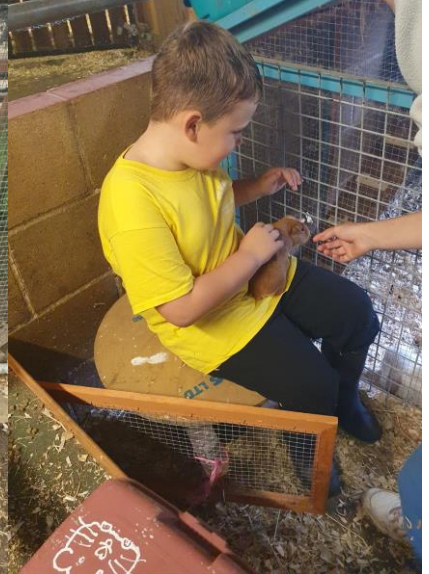


Contact:  
laurastorey@withtheball.co.uk  
07842821013



www.withtheball.co.uk

# St James' Farm Visit



## 🌟🏸 OCTOBER HOLIDAY CAMPS 🏸🌟

- Our Gymnastics Camp (5+ years and above) will involve a variety of gymnastics movements, and even more fun and games.
- Beginners Tumbling Camp (5+ years and above) Does your child continuously cartwheel around the house? If so get them on our beginners tumbling camp! We promise they will love it.
- Intermediate Tumbling Camp is for gymnasts who have experience in tumbling and take advantage of some additional coaching to do more!

All our camps will be coached by our highly qualified and friendly coaches.

**GET IN WHILE THERE ARE SPACES!**

✉ [info@checkersgymnastics.co.uk](mailto:info@checkersgymnastics.co.uk)

**THE PE & SPORTS PROJECT**

**FROM £16 A DAY**

# HALF TERM SPORT CAMPS

**CHURCHDOWN PARTON MANOR SCHOOL  
GL3 2DR**

**RECEPTION - YEAR 6 - 9:00 - 3:00**

TAG RUGBY, FOOTBALL, DANCE, CIRCUS SKILLS, FENCING,  
CHEERLEADING, STREET HOCKEY, ULTIMATE FRIZBEE, CRICKET,  
MUSICAL THEATRE, DODGEBALL, ATHLETICS  
AND MORE

**Monday 30th Oct - Friday 3rd Nov**

[THE-SPORTS-PROJECT.CLASSFORKIDS.CO.UK/CAMP/35](https://www.the-sports-project.classforkids.co.uk/camp/35)

**CLICK ON THE LINK OR COPY IT INTO YOUR BROWSER TO BOOK.**

**INDIVIDUAL DAYS £18**

**5 DAY BLOCK £80**

The PE & Sports Project uses elite level coaching practice, to provide the children with a fun, engaging, successful and positive experience.

We use our advanced 'exploration-discovery-competition' model to give the children the independence and responsibility to think and to solve problems for themselves whilst supporting and encouraging their development in a wide range of different sports.

**t: 0117 382 8444**

**e: [info@thesportsproject.org](mailto:info@thesportsproject.org)**

Ever wanted to try an instrument but not sure which one is for you? Then come along to our

## TRY AN INSTRUMENT DAY!

We will have a wide range of instruments for you to try along with an expert team of tutors to guide you.

Saturday 7th October, 10am - 12pm,  
Sir Thomas Rich's School



Let us know you're coming at [gloucestershiremusic.paritor.com](http://gloucestershiremusic.paritor.com)  
Open to children & adults of all ages.  
T 01452 427242 W [gloucestershiremusic.co.uk](http://gloucestershiremusic.co.uk)

## Scouts

46th Gloucester

Come along and join the 46th Gloucester Scout Group

You can join the Scout Group from the age of 4 upwards.  
We meet at St. John's Church Hall, St. John's Lane, Gloucester.

Take a look at our website to see some of the fun and adventures that you could be doing if you join.

For more information just send an email to [46thgloucester@gmail.com](mailto:46thgloucester@gmail.com) and we will put you in contact with the appropriate section leader.

If you are aged 8 onwards and a member of our Scout Group you can also join our band, the Gloster Gladiators Scout Band.  
No previous music experience necessary.



You can also look up meeting days and times on our Group website.

[www.46thgloucesterscoutgroup.org.uk](http://www.46thgloucesterscoutgroup.org.uk)

Or scan the QR code for a direct link to the website.



# Apply online for

# FREE

# SCHOOL

# MEALS



Check to see if your child is eligible using the confidential online portal available on our website [www.gloucestershire.gov.uk/freeschoolmeals](http://www.gloucestershire.gov.uk/freeschoolmeals)

Your child's school receives extra funding for each eligible child registered.

If you do not have internet access speak to your child's school.



You may also be able to get extra support for free milk, reduced contributions for school trips and uniform grants – check with your school.