



# St James' Church of England Junior School

Upton Street, Gloucester GL1 4JU

Telephone: (01452) 520714

Email: [admin@sjjs.dgat.org.uk](mailto:admin@sjjs.dgat.org.uk)

Website: [www.st-james-junior.co.uk](http://www.st-james-junior.co.uk)

Executive Headteacher: Mr Simon Millington



Hatherley  
INFANT SCHOOL & NURSERY



## Newsletter

4 April 2025

Our Value for the year is **Respect** Our Value for this term is **Forgiveness**

**Congratulations to our Easter Egg Competition Winners:**



**Well done to our Attendance Winner this term, Jayden-Leigh in Year 4**



**Congratulations to 3B who won the weekly attendance award again with 98.6% and 6A who were runners-up with 95.2%. The termly winners were 3B with 96% and 6B with 93.6%**  
**Congratulations to Emerald who won this term's House Award. They will have a non-school uniform day on Friday 2 May.**

**The children and staff said goodbye to Mrs Jones in the assembly, gave her gifts and wished her well in her new school.**

## Important Dates & Holidays

Take a look at the school calendar and term dates for 2024-25, 2025-26 and 2026-27 [here](#).

Friday 11 April	1.30 pm	End of Term 4 at 1.30 pm No swimming for Year 3
<i>Monday 14 – Friday 25 April</i>		<i>Easter Holidays</i>
Monday 28 April		Start of Term 5 Portfolio Day (Photos being taken for website) – Children need to be in full school uniform
Thursday 1 May		School closed as being used as a Polling Station
Friday 2 May		Emerald House Non-Uniform Day
Monday 5 May		Bank Holiday – school closed
Wednesday 7 May		School photos - Children need to be in full school uniform
Thursday 8 May	8.45 am	Reading Café for Year 6
Tuesday 20 May	9.00 am	Pentecost Service at St James' Church
Thursday 22 May	8.45 am	Reading Café for Year 5
Friday 23 May	3.20 pm	End of Term 5 at 3.20 pm

### School Hours

8.15 am	Gates Open/Breakfast Club
8.30 am	School playground is staffed – children can be left after 8.30 am
8.50 am	Pupils come into school
9.00 am	First session
3.20 pm	End of school day

**Pupils should be in school by 8.55 am.** All children who are late (when gates are shut) need to be brought into school by a parent to sign them in. If children arrive in school later than 10.30 am we may not be able to order them a hot lunch so they should bring in a packed lunch.

Breakfast Club is available from 8.15-8.45 am. **Children are expected to be punctual, but they should not arrive in school before 8.15 am when the gates open.**

### Doctors, Opticians and Dentist Appointments

Routine doctors, opticians and dentist appointments **SHOULD NOT** be made during school time. Only emergency/hospital/orthodontist appointments should be made during the school day. All other appointments should be made after school, at weekends or during the school holidays. If an appointment has already been made children should be in school before, if possible, and should be brought into school after the appointment, if time. A whole day is not required for a local appointment. We may unauthorise the morning/afternoon. Please email or text if your child is going to an appointment. If you have to make an appointment for your child at the beginning of the day, please inform the school, so we can expect them in school later and also order them a hot lunch, if required.

**REMINDER:** School meals are **£2.71** per day and **£13.55** for a week and should be paid in advance via Parentpay. Please make sure all accounts are up-to-date and in credit.

Parentpay logins for all children are available in the office. The school office is open from 8.30 am – 3.30 pm. If you have a Parentpay account and our having problems accessing it; please contact Parentpay via their website.

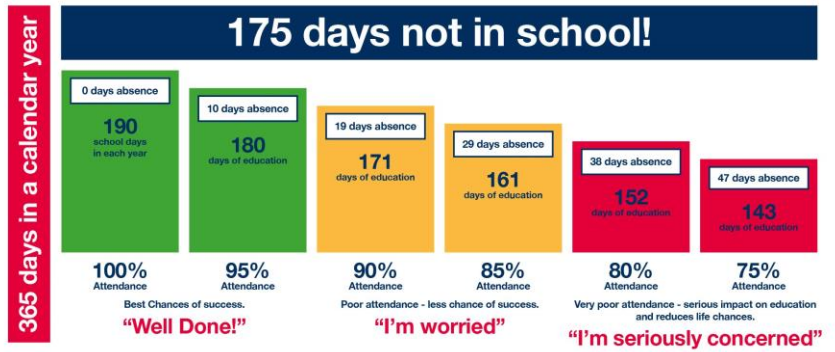
## Got a question? Need to know something?

Please take a look at the website first before ringing us – [www.st-james-junior.co.uk](http://www.st-james-junior.co.uk)

Term Dates ● School Calendar ● Trips and Visits

# Good attendance means...

Being in school at least 95% of the time or 180 to 190 days



## Design an Easter Egg Competition - Winners 2025

### Year 3A

- 1<sup>st</sup> place- Muhammad Yaseen Ali Kousar
- 2<sup>nd</sup> Place- Sumiya Islam
- 3<sup>rd</sup> Place- Alice Kolak

### Year 3B

- 1<sup>st</sup> place- Ioana Ilies
- 2<sup>nd</sup> Place- Hassan Davar
- 3<sup>rd</sup> Place- Aria Paddy

### Year 4A

- 1<sup>st</sup> place- Ayrah Jeffs Sinclair
- 2<sup>nd</sup> Place- Anabiya Ghouri
- 3<sup>rd</sup> Place- Naira Raha

### Year 4B

- 1<sup>st</sup> place- Ameya Saju
- 2<sup>nd</sup> Place- Taliya Piyasena
- 3<sup>rd</sup> Place- Monica Ferencova

### Year 4A

- 1<sup>st</sup> place- Rabiah Marauna
- 2<sup>nd</sup> Place- Leona Kancova
- 3<sup>rd</sup> Place- Suleman Lasa Patel

### Year 6A

- 1<sup>st</sup> place- Vanuji Kudagama Liyanage
- 2<sup>nd</sup> Place- Pearl Ojugo
- 3<sup>rd</sup> Place- Hannah Jaison

### Year 6B

- 1<sup>st</sup> place- Sajjad Youseffi
- 2<sup>nd</sup> Place- Freya Robins
- 3<sup>rd</sup> Place- Mariah Duffus

## Ukele Performance by 4A

Well done to 4A for their ukele performance this week.



# Goose Trail

## Family Easter Trail

Thursday 10 April, 11am - 2pm  
Thursday 17 April, 11am - 2pm

£2.50 includes a prize!  
[llanthonysecunda.org](http://llanthonysecunda.org)

Llanthony Secunda Priory

JAMES HOPKINS TRUST

# Easter Extravaganza

SATURDAY 12TH APRIL  
1-5PM

ABBEYDALE COMMUNITY CENTRE

STALLS, GAMES, CAKES,  
FACE PAINTING,  
SPECIAL GUESTS,  
RAFFLE AND MORE!

CHILDREN FREE ENTRY  
ADULTS £3

## Ribston Hall High School Admissions Information Morning

**Rescheduled Date: Monday 28th April 2025**

Due to a change in the timing of a planned road closure, our Admissions Information Morning (previously booked for Tuesday 8th April) has been rescheduled to Monday, 28th April 2025.

Messages have been sent to those who have already registered and bookings will be transferred to the new date automatically.

Our Admissions Information Morning is designed for Year 5 families to explore how we can support your child's secondary school journey and guide you through the grammar school admissions process.

<https://www.ribstonhall.gloucs.sch.uk/join-us>



The Venture Community Hub *and friends are hosting a*

## POP UP ACTIVITY DAY

**TUESDAY 15TH APRIL: 10AM – 2PM**

**Coney Hill Park & The Vibe Youth Centre  
Stanway Road, GL4 4RE**

**Read With Me . The Music Works . Mad About  
Art . Little Monsters Sport . That White Room .  
Free Lunch from the Eat Well Wagon . Wild &  
Green Outdoor Learning . Archery . And More !**



## THE GREAT SPRING STEM OFF

**Thursday 17th April 2025**

**HUCCLECOTE COMMUNITY CENTRE  
GL3 3RT GLOUCESTER**

10AM-12.30 PM  
CRAFTING COOL MACHINES

<https://gloucestercitydistrict.coordinate.cloud/project/65868>

1 PM-3 PM  
EGG DROP PARACHUTES -  
SEN SESSION

<https://gloucestercitydistrict.coordinate.cloud/project/65864>



**FULLY FUNDED FOR CHILDREN  
ATTENDING A SCHOOL IN  
GLOUCESTERSHIRE WHO ARE  
ELIGIBLE FOR BENEFIT-RELATED  
FREE SCHOOL MEALS.**

0208 150 3767

accounts@bloodhoundeducation.com

## Time Out for Parents: Children with Additional Needs Course

The course begins on **Thursday 15th May 2025, 10am- 12noon**, in person at Treasure Seekers, 52 Westgate Street, Gloucester, GL1 2NF.

There are 7 sessions on consecutive Thursdays (There will be no session on Thursday 29th May during the school break). The final session is on Thursday 3rd July 2025.

The cost is £40 total

**Parents can book a place on the course using the link below:**

<https://kftseekers.org.uk/service/time-out-for-parents-children-with-additional-needs/>

This course is for parents of any child with an additional need for support, if:

- You are struggling to understand or manage your child’s behaviour, or
- Your child has developmental challenges, or
- Your child becomes overwhelmed by their emotions, or
- You’re feeling isolated because of your child’s needs, or
- Traditional parenting methods are just not working well for your family,

Absolutely no official ‘diagnosis’ is necessary, you don’t even have to know what might be causing your child to need extra help. Through the course we encourage a willingness to explore ideas and find out what works for you and your family. We recognise that all children are individuals and no-one knows your child better than you. The course offers practical, jargon-free advice and practical steps to engage and build relationships with your children with additional needs. The course is also a great opportunity to build relationships with other parents.



## St James' Church of England Junior School

### School Term Dates & Holidays - 2024-25

SEPTEMBER					OCTOBER					NOVEMBER							
Monday	2	9	16	23	30	Monday	7	14	21	28	Monday	4	11	18	25		
Tuesday	3	10	17	24		Tuesday	1	8	15	22	29	Tuesday	5	12	19	26	
Wednesday	4	11	18	25		Wednesday	2	9	16	23	30	Wednesday	6	13	20	27	
Thursday	5	12	19	26		Thursday	3	10	17	24	31	Thursday	7	14	21	28	
Friday	6	13	20	27		Friday	4	11	18	25		Friday	1	8	15	22	29
Saturday	7	14	21	28		Saturday	5	12	19	26		Saturday	2	9	16	23	30
Sunday	1	8	15	22	29	Sunday	6	13	20	27		Sunday	3	10	17	24	
DECEMBER					JANUARY					FEBRUARY							
Monday	2	9	16	23	30	Monday	6	13	20	27	Monday	3	10	17	24		
Tuesday	3	10	17	24	31	Tuesday	7	14	21	28	Tuesday	4	11	18	25		
Wednesday	4	11	18	25		Wednesday	1	8	15	22	29	Wednesday	5	12	19	26	
Thursday	5	12	19	26		Thursday	2	9	16	23	30	Thursday	6	13	20	27	
Friday	6	13	20	27		Friday	3	10	17	24	31	Friday	7	14	21	28	
Saturday	7	14	21	28		Saturday	4	11	18	25		Saturday	1	8	15	22	
Sunday	1	8	15	22	29	Sunday	5	12	19	26		Sunday	2	9	16	23	
MARCH					APRIL					MAY							
Monday	3	10	17	24	31	Monday	7	14	21	28	Monday	5	12	19	26		
Tuesday	4	11	18	25		Tuesday	1	8	15	22	29	Tuesday	6	13	20	27	
Wednesday	5	12	19	26		Wednesday	2	9	16	23	30	Wednesday	7	14	21	28	
Thursday	6	13	20	27		Thursday	3	10	17	24		Thursday	1	8	15	22	29
Friday	7	14	21	28		Friday	4	11	18	25		Friday	2	9	16	23	30
Saturday	1	8	15	22	29	Saturday	5	12	19	26		Saturday	3	10	17	24	31
Sunday	2	9	16	23	30	Sunday	6	13	20	27		Sunday	4	11	18	25	
JUNE					JULY					AUGUST							
Monday	2	9	16	23	30	Monday	7	14	21	28	Monday	4	11	18	25		
Tuesday	3	10	17	24		Tuesday	1	8	15	22	29	Tuesday	5	12	19	26	
Wednesday	4	11	18	25		Wednesday	2	9	16	23	30	Wednesday	6	13	20	27	
Thursday	5	12	19	26		Thursday	3	10	17	24	31	Thursday	7	14	21	28	
Friday	6	13	20	27		Friday	4	11	18	25		Friday	1	8	15	22	29
Saturday	7	14	21	28		Saturday	5	12	19	26		Saturday	2	9	16	23	30
Sunday	1	8	15	22	29	Sunday	6	13	20	27		Sunday	3	10	17	24	31

Term Time	School Holidays	Bank Holidays	INSET Days (No children in school)
Election Day (School Closed as being used as a Polling Station)			

#### Term Dates 2024/25

- Term 1: Wednesday 4 September – Friday 25 October 2024
- Term 2: Monday 4 November – Fri 20 December 2024
- Term 3: Tuesday 7 January - Friday 14 February 2025
- Term 4: Tuesday 25 February – Friday 11 April 2025
- Term 5: Monday 28 April – Friday 23 May 2025
- Term 6: Monday 2 June – Friday 18 July 2025

#### Bank Holidays 2024/25

- Christmas Bank Holidays: Wednesday 25 December 2024, Thursday 26 December 2024
- New Year Bank Holiday: Wednesday 1 January 2025
- Good Friday: Friday 18 April 2025
- Easter Monday: Monday 21 April 2025
- Early May Bank Holiday: Monday 5 May 2025
- Spring Bank Holiday: Monday 26 May 2025
- Summer Bank Holiday: Monday 25 August 2025

INSET Days: Monday 2 & Tuesday 3 September 2024, Monday 6 January, Monday 24 February, Monday 21 July (Children not in school).