



St James' Church of England Junior School

Upton Street, Gloucester GL1 4JU
Telephone: (01452) 520714
Email: admin@sjjs.dgat.org.uk
Website: www.st-james-junior.co.uk
Acting Headteacher: Mrs E Gardiner



Newsletter



24 October 2025

Our Value for the year is **Respect** Our Value for this term is **Kindness**

We are pleased to share that our school has been invited to attend the installation service for the new Priest in Charge at our local church. This special occasion marks the beginning of his ministry within our community. The service will take place at St James' Church, Upton Street on Monday 3rd November 2025 at 7:00 pm.

As a school, we have a long-standing and valued relationship with the church, and we look forward to working closely with Revd Stephen Saville as he takes up his new post and throughout his time with us. The service will be a wonderful opportunity for our families to take part in an important community event and to welcome the Revd into his new role.

Congratulations to our:

Values Cup Winners



Good Work Winners



Congratulations to 4B who won the weekly attendance award with 98.3% and 4A who were runners-up with 97.5%. Well done!

Important Dates & Holidays – Please keep a copy of the term dates handy!

Take a look at the school calendar and term dates for 2025-26 and 2026-27 [here](#).

Friday 24 October	End of Term 1 at 3.20 pm
Monday 27– Friday 31 October	October Half Term
Monday 3 November	Start of Term 2
Thursday 6 November	Swimming for Year 5
Friday 7 November	Non-uniform Day for Emerald House (no payment) Swimming for Year 6
Tuesday 11 November	Remembrance Service in School
Thursday 13 November	Swimming for Year 5
Friday 14 November	Swimming for Year 6

Panto in November

If you haven't brought in your child's panto reply slip and payment please do so today or the first week of the new term. Thanks to all those who have already brought them into us.

If your child doesn't wish to attend please send back the slip. Thanks

School Hours

8.15 am	Gates Open/Breakfast Club
8.30 am	School playground is staffed – children can be left after 8.30 am
8.45 am	Pupils come into school
9.00 am	First session
3.20 pm	End of school day

Pupils should be in school by 8.45 am. All children who are late (when gates are shut) need to be brought into school by a parent to sign them in. If children arrive in school later than 10.30 am we may not be able to order them a hot lunch so they should bring in a packed lunch.

Breakfast Club is available from 8.15-8.45 am. **Children are expected to be punctual, but they should not arrive in school before 8.15 am when the gates open.**

Data Sheets

Thank you to those parents that have returned their child's data sheet. If you haven't can you please bring it in asap? It is important that we have up-to-date information. Thanks

Doctors, Opticians and Dentist Appointments

Routine doctors, opticians and dentist appointments **SHOULD NOT** be made during school time. Only emergency appointments and hospital appointments should be made during the school day. All other appointments should be made after school, at weekends or during the school holidays. If an appointment has already been made children should be in school before, if possible, and should be brought into school after the appointment, if time. A whole day is not required for a local appointment. Please email or text if your child is going to an appointment. If you have to make an appointment for your child at the beginning of the day, please inform the school.

Year 6 Oxford trip photographs [here](#).

Wick Court Farm Residential photos are available [here](#).

Parentpay

Please make sure all Parentpay accounts are in credit for the start of the new term.

Non-uniform Day for Emerald House on Friday 7 November (no payment)


New Caterlink menus available [here](#) for after Half-term.

ATTENDANCE MATTERS

IN ONE SCHOOL YEAR

97% = 6
attendance days off

= 30 hours
of learning lost




PUNCTUALITY MATTERS

IN ONE SCHOOL YEAR

5 MINUTES
late each day

= 3 days off
in total



LATENESS

How much time can you lose?

IN ONE SCHOOL YEAR

5 minutes
late each day

= 3 days off



190 DAYS
100%




Very best chance of success

183 DAYS
96%



Off to a flying start

179 DAYS
94%



Less chance of success

175 DAYS
92%



Harder to make progress

More than **18 days** absence less than **90%**

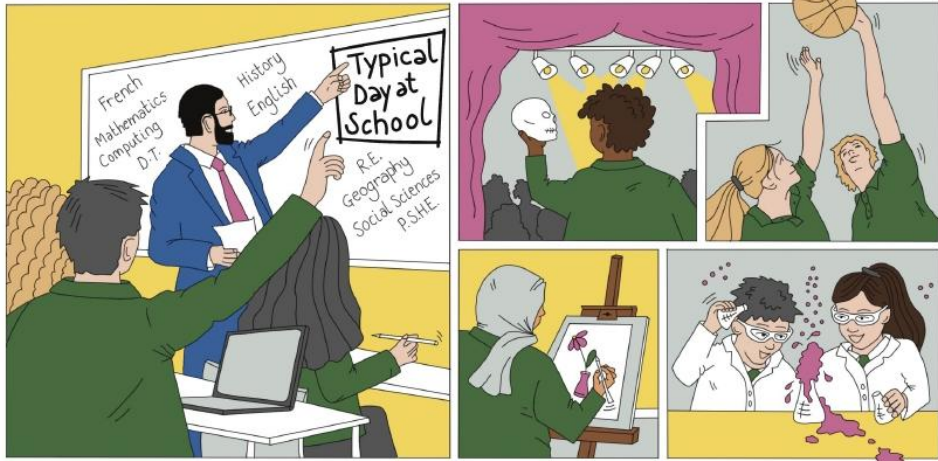


Persistent Absentee
(Not fair on your child)

NEWENT LIVE

COME AND SEE US IN ACTION

To book your appointment
 From now until the end of term December 2025
 Email: headspa@newent.gloucs.sch.uk
 Two time slots available any weekday morning
 Between 10.00-10.40 and 11.10-11.50



NEWENT COMMUNITY SCHOOL AND SIXTH FORM CENTRE



Nature Nurtures

Free nature sessions at Robinswood Hill



Join our **FREE** sessions, running after school for 8 weeks at Robinswood Hill Country Park in Gloucester. The sessions are designed to get children struggling with low level mental health issues, learning about nature and meeting new people.

Contact Katie at Gloucestershire Wildlife trust to find out more and sign up: katie.hall@gloucestershirewildlifetrust.co.uk

Ages 5 - 7
Thursdays
4 - 6pm
30th October -
18th December
2025

Ages 8 - 11
Wednesdays
4 - 6pm
29th October -
17th December
2025

Ages 11 - 15
Tuesday
4.30 - 6.30pm
28th October - 16th
December
2025



Thank you to the NHS, our local community and business for making this project possible.



Beezee FAMILIES

Take the 'scare' out of school holidays!



Beezee Families is our **FREE** healthy lifestyle programme, designed to help you learn more about healthy eating and finding habits that work for you. Check out these fun spooktacular activities to keep your little monsters entertained this half term.

Activity 1:

Munchable Mummies

Give making these boootiful munchable mummies a go!



Activity 2:

Get crafty with your recycling

Use toilet roll tubes to make your own devilish decorations, create a haunted house out of an old cereal box or print off this fun bat cutout to make your own ghoulish garlands!



Activity 3:

Walk this way

Get the family all wrapped up and explore the great outdoors this autumn.



Activity 4:

Learn a brand-new dance routine

Get you and the kids dancefloor-ready for the Halloween party season!



Want more healthy lifestyle support?

Check out our website to find out how we can help your family.*

Scan here or Click the link



LIGHT TRAIL

STARTS AT MARINERS CHAPEL, THE DOCKS

31st October
5-8pm
 [last entry 7:00pm]

FREE

ALL AGES WELCOME
 ACCESSIBLE ROUTE

SIGN UP TO
 GUARANTEE
 A TICKET



MARINERSGLOUCESTER.ORG.UK
 /CALENDAR

LIGHT ACTIVITY TRAIL WITH
GLOW STICKS SWEETS,
 AND A RANGE OF
FUN ACTIVITIES!

COMPLETE TO CLAIM A PRIZE
 & FREE HOT CHOCOLATE








HALLOWEEN SPORTS CAMP

OCTOBER 27th – 31ST
AT SIR THOMAS RICH'S SCHOOL
FROM 08:00 – 17:30

WWW.JUSTCAMPS.CO.UK/REGISTER





St James' Church of England Junior School

School Term Dates & Holidays - 2025-26

SEPTEMBER					OCTOBER					NOVEMBER							
Monday	1	8	15	22	29	Monday	6	13	20	27	Monday	3	10	17	24		
Tuesday	2	9	16	23	30	Tuesday	7	14	21	28	Tuesday	4	11	18	25		
Wednesday	3	10	17	24		Wednesday	1	8	15	22	29	Wednesday	5	12	19	26	
Thursday	4	11	18	25		Thursday	2	9	16	23	30	Thursday	6	13	20	27	
Friday	5	12	19	26		Friday	3	10	17	24	31	Friday	7	14	21	28	
Saturday	6	13	20	27		Saturday	4	11	18	25		Saturday	1	8	15	22	29
Sunday	7	14	21	28		Sunday	5	12	19	26		Sunday	2	9	16	23	30

DECEMBER					JANUARY					FEBRUARY						
Monday	1	8	15	22	29	Monday	5	12	19	26	Monday	2	9	16	23	
Tuesday	2	9	16	23	30	Tuesday	6	13	20	27	Tuesday	3	10	17	24	
Wednesday	3	10	17	24	31	Wednesday	7	14	21	28	Wednesday	4	11	18	25	
Thursday	4	11	18	25		Thursday	1	8	15	22	29	Thursday	5	12	19	26
Friday	5	12	19	26		Friday	2	9	16	23	30	Friday	6	13	20	27
Saturday	6	13	20	27		Saturday	3	10	17	24	31	Saturday	7	14	21	28
Sunday	7	14	21	28		Sunday	4	11	18	25		Sunday	1	8	15	22

MARCH					APRIL					MAY							
Monday	2	9	16	23	30	Monday	6	13	20	27	Monday	4	11	18	25		
Tuesday	3	10	17	24	31	Tuesday	7	14	21	28	Tuesday	5	12	19	26		
Wednesday	4	11	18	25		Wednesday	1	8	15	22	29	Wednesday	6	13	20	27	
Thursday	5	12	19	26		Thursday	2	9	16	23	30	Thursday	7	14	21	28	
Friday	6	13	20	27		Friday	3	10	17	24		Friday	1	8	15	22	29
Saturday	7	14	21	28		Saturday	4	11	18	25		Saturday	2	9	16	23	30
Sunday	1	8	15	22	29	Sunday	5	12	19	26		Sunday	3	10	17	24	31

JUNE					JULY					AUGUST							
Monday	1	8	15	22	29	Monday	6	13	20	27	Monday	3	10	17	24	31	
Tuesday	2	9	16	23	30	Tuesday	7	14	21	28	Tuesday	4	11	18	25		
Wednesday	3	10	17	24		Wednesday	1	8	15	22	29	Wednesday	5	12	19	26	
Thursday	4	11	18	25		Thursday	2	9	16	23	30	Thursday	6	13	20	27	
Friday	5	12	19	26		Friday	3	10	17	24	31	Friday	7	14	21	28	
Saturday	6	13	20	27		Saturday	4	11	18	25		Saturday	1	8	15	22	29
Sunday	7	14	21	28		Sunday	5	12	19	26		Sunday	2	9	16	23	30

Term Time	School Holidays	Bank Holidays	INSET Days (No children in school)
-----------	-----------------	---------------	------------------------------------

Term Dates 2025-26

- Term 1: Wednesday 3 September – Friday 24 October 2025
- Term 2: Monday 3 November – Fri 19 December 2025
- Term 3: Tuesday 6 January - Friday 13 February 2026
- Term 4: Tuesday 24 February – Friday 27 March 2026
- Term 5: Tuesday 14 April – Friday 22 May 2026
- Term 6: Monday 1 June – Friday 17 July 2026

Bank Holidays 2025-26:

- Christmas Bank Holidays** Thursday 25 December 2025
Friday 26 December 2025
- New Year Bank Holiday** Thursday 1 January 2025
- Good Friday** Friday 3 April 2026
- Easter Monday** Monday 6 April 2026
- Early May Bank Holiday** Monday 4 May 2026
- Spring Bank Holiday** Monday 25 May 2026
- Summer Bank Holiday** Monday 31 August 2026

INSET Days: Monday 1 & Tuesday 2 September 2025, Monday 5 January 2026, Monday 23 February and Monday 20 July

