

St James' Church of England Junior School



Upton Street, Gloucester GL1 4JU
Telephone: (01452) 520714
Email: admin@sjs.dgat.org.uk
Website: www.st-james-junior.co.uk
Acting Headteacher: Mrs E Gardiner



Newsletter



7 November 2025

Our Value for the year is **Respect** Our Value for this term is **Love**

Congratulations to our:

Values Cup Winners



Good Work Winners



Congratulations to 4A who won the weekly attendance award with 96.6% and 5A who were runners-up with 95%. Well done!

Important Dates & Holidays – Please keep a copy of the term dates handy!

Take a look at the school calendar and term dates for 2025-26 and 2026-27 [here](#).

Tuesday 11 November	Remembrance Service in School
Thursday 13 November	Swimming for Year 5
Friday 14 November	Swimming for Year 6
Wednesday 19 November	M&M Theatre Productions - Robin Hood
Thursday 20 November	Rugby Sessions
	Swimming for Year 5
Friday 21 November	Swimming for Year 6
Thursday 27 November	Swimming for Year 5
Friday 28 November	Swimming for Year 6

School Hours

8.15 am	Gates Open/Breakfast Club
8.30 am	School playground is staffed – children can be left after 8.30 am
8.45 am	Pupils come into school
9.00 am	First session
3.20 pm	End of school day

Pupils should be in school by 8.45 am. All children who are late (when gates are shut) need to be brought into school by a parent to sign them in. If children arrive in school later than 10.30 am we may not be able to order them a hot lunch so they should bring in a packed lunch.

Breakfast Club is available from 8.15-8.45 am. **Children are expected to be punctual, but they should not arrive in school before 8.15 am when the gates open.**

Data Sheets

Thank you to those parents that have returned their child's data sheet. If you haven't can you please bring it in asap? It is important that we have up-to-date information. Thanks

Doctors, Opticians and Dentist Appointments

Routine doctors, opticians and dentist appointments **SHOULD NOT** be made during school time. Only emergency appointments and hospital appointments should be made during the school day. All other appointments should be made after school, at weekends or during the school holidays. If an appointment has already been made children should be in school before, if possible, and should be brought into school after the appointment, if time. A whole day is not required for a local appointment. Please email or text if your child is going to an appointment. If you have to make an appointment for your child at the beginning of the day, please inform the school.

REMINDER: School meals are £2.71 per day and £13.55 for a week and should be paid in advance via Parentpay. Please make sure all accounts are up-to-date and in credit.

Parentpay logins for all new children are available in the office. The school office is open from 8.30 am – 3.30 pm.

Good attendance means...

Being in school at least 95% of the time or 180 to 190 days

365 days in a calendar year

175 days not in school!



WEDNESDAY 17 DECEMBER - CHRISTMAS LUNCH @ ST JAMES'

The Christmas meal has to be pre-ordered by 21 November.

£2.71 payable via Parentpay or cash if no Parentpay account. *There will only be a choice of A or B, no Jacket potatoes. Children can bring their packed lunch as normal.*

Your child will have brought home a form to choose their Christmas meal – please return asap.

caterlink
feeding the imagination

**merry
CHRISTMAS**

**CHRISTMAS DINNER
WEDNESDAY 17 DECEMBER**

**A - ROAST TURKEY WITH STUFFING
& VEGETARIAN SAUSAGE**

B - CHRISTMAS VEGETABLE WELLINGTON

**A & B BOTH WITH:
ROAST POTATOES
CARROTS & PEAS
GRAVY & CRANBERRY SAUCE**

CHRISTMAS GINGERBREAD



Boys' Football Match Report – St James's vs Linden Primary Thursday Match Update

This Thursday, our St James's boys' football team took to the field to face Linden Primary School in what turned out to be a real game of two halves!

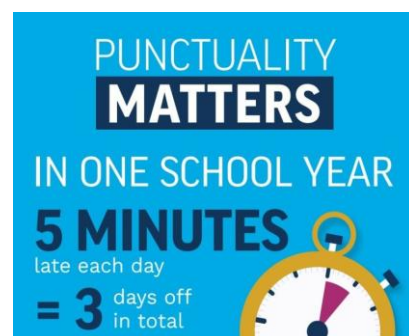
In the first half, the boys showed fantastic teamwork and determination. There were some brilliant passages of play, and they put plenty of pressure on Linden's defence. Despite several promising attacks, the ball just wouldn't find the back of the net. Unfortunately, Linden managed to make the most of two breakaway chances, taking a 2-0 lead into half-time.

As the second half got underway, our team began to tire, and Linden started to dominate possession. Despite the boys' continued effort and commitment, Linden added three more goals before the final whistle, leaving the score at **5-0**.

Although the result didn't go our way, both **Mr Hutchinson and I** feel that the scoreline doesn't reflect how well the boys actually played. They showed great spirit, never gave up, and gave 100% effort from start to finish.

Well done to all the players for their determination and teamwork — we're proud of you! 🙌

Bring on next week, when we hit the road again to face **Finlay Primary School!** 🏆 🤝



GCC are in the process of recruiting **volunteer Panel Members** to assist with virtual School Admission Appeals. We are particularly in need of Parent Members (those with children currently in education). [Apply to become a volunteer school appeals panel member | Gloucestershire County Council](#)

NEWENT LIVE

COME AND SEE US IN ACTION

To book your appointment

From now until the end of term December 2025

Email: headspa@newent.gloucs.sch.uk

Two time slots available any weekday morning

Between 10.00-10.40 and 11.10-11.50



NEWENT COMMUNITY SCHOOL AND SIXTH FORM CENTRE

190
DAYS
100%



Very best
chance of
success

183
DAYS
96%



Off to
a flying
start

179
DAYS
94%



Less
chance of
success

175
DAYS
92%



Harder
to make
progress

More than
18 days
absence less
than 90%



Persistent
Absentee
(Not fair on your child)

Gloucester City

HAF    
holiday activities & food

GLOUCESTER CITY HAF PROVIDES FREE ACTIVITIES AND FOOD FOR SCHOOL AGE CHILDREN.

HAF takes place three times a year during school holidays in:

- Spring
- Summer
- Winter



Signposting

You can contact us for support and we can signpost you to organisations that can help you.



Food

Food is available during activities making sure your children have access to a healthy meal.



Activities

Free activities that can be booked online including:

- Family activities
- Children and young people activities
- Ticketed attractions



If you need help to sign up or book activities contact us:

gloshafconnector@gmail.com

07340709871

familyhubs.gloucestershire.gov.uk

 **Glos city HAF**

Free Winter Activities for Children, Young People & Families



The Holiday Activity and Food programme (HAF) returns this winter with lots of fun activities and delicious food available for children and families from **20 December to 4 January**.

HAF activities are available for children and young people who receive benefits-related free school meals. This winter we are also able to extend this offer to any child who may benefit from attending the programme, through our grant funded Holiday Activities Programme (HAP).

Bookings open from midday on 1 December. Make sure you're ready to book by checking your account now

familyhubs.gloucestershire.gov.uk

Use our handy checklist below to make sure that:

- All your children have an individual profile added to your account.
- Emergency contact details are filled in for each child profile
- Any additional needs or disability information is included for each child profile
- Your details reflect any recent changes (e.g. new address, phone contact details)

Setting up an account is easy:

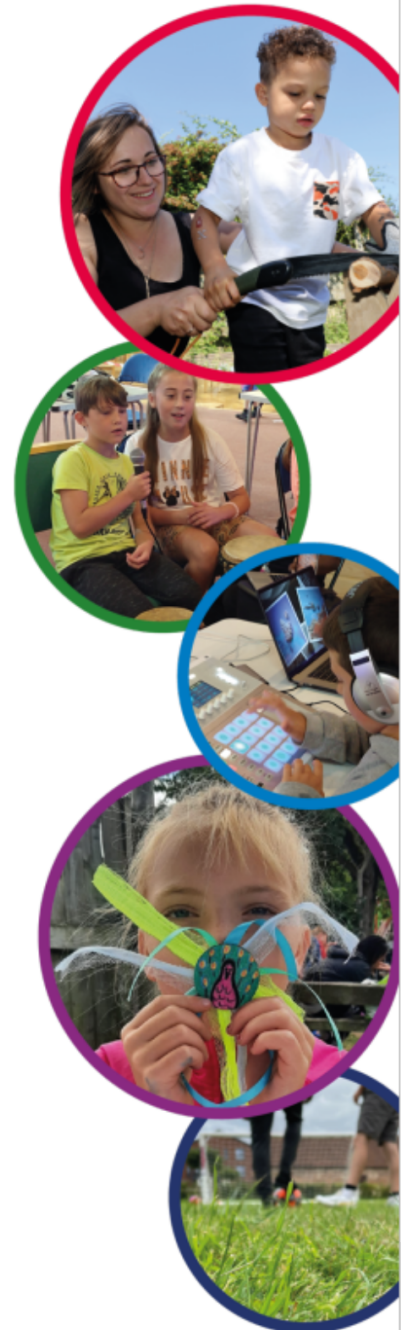
Scan this QR Code with a phone camera for quick access



If you need any HAF related help then please contact us:

T: 07340 709 871

E: gloshafconnector@gmail.com





St James' Church of England Junior School

School Term Dates & Holidays - 2025-26

SEPTEMBER					OCTOBER					NOVEMBER							
Monday	1	8	15	22	29	Monday	6	13	20	27	Monday	3	10	17	24		
Tuesday	2	9	16	23	30	Tuesday	7	14	21	28	Tuesday	4	11	18	25		
Wednesday	3	10	17	24		Wednesday	1	8	15	22	29	Wednesday	5	12	19	26	
Thursday	4	11	18	25		Thursday	2	9	16	23	30	Thursday	6	13	20	27	
Friday	5	12	19	26		Friday	3	10	17	24	31	Friday	7	14	21	28	
Saturday	6	13	20	27		Saturday	4	11	18	25		Saturday	1	8	15	22	29
Sunday	7	14	21	28		Sunday	5	12	19	26		Sunday	2	9	16	23	30
DECEMBER					JANUARY					FEBRUARY							
Monday	1	8	15	22	29	Monday	5	12	19	26		Monday	2	9	16	23	
Tuesday	2	9	16	23	30	Tuesday	6	13	20	27		Tuesday	3	10	17	24	
Wednesday	3	10	17	24	31	Wednesday	7	14	21	28		Wednesday	4	11	18	25	
Thursday	4	11	18	25		Thursday	1	8	15	22	29	Thursday	5	12	19	26	
Friday	5	12	19	26		Friday	2	9	16	23	30	Friday	6	13	20	27	
Saturday	6	13	20	27		Saturday	3	10	17	24	31	Saturday	7	14	21	28	
Sunday	7	14	21	28		Sunday	4	11	18	25		Sunday	1	8	15	22	
MARCH					APRIL					MAY							
Monday	2	9	16	23	30	Monday	6	13	20	27		Monday	4	11	18	25	
Tuesday	3	10	17	24	31	Tuesday	7	14	21	28		Tuesday	5	12	19	26	
Wednesday	4	11	18	25		Wednesday	1	8	15	22	29	Wednesday	6	13	20	27	
Thursday	5	12	19	26		Thursday	2	9	16	23	30	Thursday	7	14	21	28	
Friday	6	13	20	27		Friday	3	10	17	24		Friday	1	8	15	22	29
Saturday	7	14	21	28		Saturday	4	11	18	25		Saturday	2	9	16	23	30
Sunday	1	8	15	22	29	Sunday	5	12	19	26		Sunday	3	10	17	24	31
JUNE					JULY					AUGUST							
Monday	1	8	15	22	29	Monday	6	13	20	27	Monday	3	10	17	24	31	
Tuesday	2	9	16	23	30	Tuesday	7	14	21	28	Tuesday	4	11	18	25		
Wednesday	3	10	17	24		Wednesday	1	8	15	22	29	Wednesday	5	12	19	26	
Thursday	4	11	18	25		Thursday	2	9	16	23	30	Thursday	6	13	20	27	
Friday	5	12	19	26		Friday	3	10	17	24	31	Friday	7	14	21	28	
Saturday	6	13	20	27		Saturday	4	11	18	25		Saturday	1	8	15	22	29
Sunday	7	14	21	28		Sunday	5	12	19	26		Sunday	2	9	16	23	30

Term Time	School Holidays	Bank Holidays	INSET Days (No children in school)
-----------	-----------------	---------------	------------------------------------

Term Dates 2025-26

- Term 1: Wednesday 3 September – Friday 24 October 2025
- Term 2: Monday 3 November – Fri 19 December 2025
- Term 3: Tuesday 6 January - Friday 13 February 2026
- Term 4: Tuesday 24 February – Friday 27 March 2026
- Term 5: Tuesday 14 April – Friday 22 May 2026
- Term 6: Monday 1 June – Friday 17 July 2026

Bank Holidays 2025-26:

- Christmas Bank Holidays: Thursday 25 December 2025, Friday 26 December 2025
- New Year Bank Holiday: Thursday 1 January 2025
- Good Friday: Friday 3 April 2026
- Easter Monday: Monday 6 April 2026
- Early May Bank Holiday: Monday 4 May 2026
- Spring Bank Holiday: Monday 25 May 2026
- Summer Bank Holiday: Monday 31 August 2026

INSET Days: Monday 1 & Tuesday 2 September 2025, Monday 5 January 2026, Monday 23 February and Monday 20 July



REMEMBRANCE DAY
Lest We Forget